

# Deep Learning Approach for Realistic Traffic Video Changes Across Lighting and Weather Conditions

Md Shadab Alam\*  
Industrial Design  
Eindhoven University of  
Technology  
Eindhoven, The Netherlands  
0000-0001-9184-9963

\*Corresponding author

Sagar Hitendra Parmar  
Amazon Fire TV  
Amazon  
Bangalore, India  
0000-0008-1326-6525

Marieke H. Martens  
Industrial Design  
Eindhoven University of  
Technology  
Eindhoven, The Netherlands  
0000-0002-1661-7019

Pavlo Bazilinskyy  
Industrial Design  
Eindhoven University of  
Technology  
Eindhoven, The Netherlands  
0000-0001-9565-8

**Abstract**—Recent advances in GAN-based architectures have led to innovative methods for image transformation. The lack of diversity of environmental factors, such as lighting conditions and seasons in public data, prevents researchers from effectively studying the differences in the behaviour of road users under varying conditions. This study introduces a deep learning pipeline that combines CycleGAN-turbo and Real-ESRGAN to improve video transformations of traffic scenes. Evaluated using dashcam videos from Los Angeles, London, and Hong Kong, our pipeline demonstrates a notable improvement in T-SIMM for temporal consistency during night-to-day transformations, achieving a 7.97% increase for Hong Kong, 7.35% for Los Angeles, and 3.41% for London compared to CycleGAN-turbo. PSNR and VPQ scores are comparable, but the pipeline performs better in DINO structure similarity and KL divergence, with up to 153.49% better structural fidelity in Hong Kong compared to Pix2Pix and 107.32% better compared to ToDayGAN. This approach demonstrates better realism and temporal coherence in day-to-night, night-to-day, and clear-to-rainy transitions.

**Keywords**— *Traffic Scenes, Generative Adversarial Networks, Diffusion Models, Environmental Conditions*

## I. INTRODUCTION

Human behaviour in traffic has been studied extensively. Garay et al. (2004) used a simulator task to compare the scanning behaviour of drivers in the night and daytime driving situations [1]. They determined that all 48 participants were less likely to scan for risks at night, with 24 novice drivers (aged 16–17 years) and 24 experienced drivers (aged 40–50 years) participating in the study. This study revealed a significant overall effect of lighting conditions on risk prediction accuracy ( $F(1, 46) = 18.74, p < 0.001$ ). The novice drivers correctly identified the risks 46% of the time during daytime conditions, compared to 37% at night. In contrast, experienced drivers demonstrated higher accuracy, predicting risk 67% of the time during the day and 55% at night. This indicates that although experienced drivers outperformed novices in both lighting conditions, both groups were adversely affected by reduced visibility at night. Tränkle et al. (1990) found that young male drivers (aged 18–21) rated traffic situations as less risky than older males (aged 35–75 years), particularly in situations involving darkness, curved roadways and rural environments [2]. Siddique et al. (2006) studied the severity of pedestrian

injuries, including differences in crossing locations and light conditions [3]. They showed that the chances of pedestrians sustaining a fatal injury are 49% lower at intersections than at midblock locations under daylight conditions, 24% lower under dark-with-street-light conditions, and 5% lower under dark-without-street-light conditions. Compared to dark conditions without street lighting, daylight reduces the odds of a fatal injury by 75% at mid-block locations and 83% at intersections, while street lighting reduces the odds by 42% at midblock locations and 54% at intersections. Evans et al. (2020) compared risk and difficulty from the driver's point of view during day and night by showing 14 different videos in which 12 videos were in pairs from the same location, but the traffic conditions were different [4]. In addition, the authors were unable to collect the videos in time for the remaining two videos. Campbell et al. (2003) showed in their review that fatal pedestrian crashes are more likely to occur during nighttime hours, and nonfatal pedestrian crashes are more likely to occur during daytime hours [5]. The probability of a pedestrian being killed increases at least three times when the person is involved in a night-time crash compared to a daytime crash [6], [7]. A large body of research determines the reasons for the high risk of death in traffic at night [8], [9], [10], [11].

The limitations of existing public traffic datasets present a challenge in this area. However, datasets, such as CamVid [12], Cityscapes [13], KITTI [14], LYFT L5 [15], and H3D [16], have traffic scenes only from daylight and a clear sky. Some datasets, such as AppolloScape [17] and KAIST [18], do have scenes of rainy conditions but do not have scenes of driving at night.

Since the advent of deep learning frameworks such as Generative Adversarial Networks (GANs) and Diffusion models, both architectures have shown the potential to translate one image from one environment to another. Zhao et al. (2017) [19] used Deep Convolutional Generative Adversarial Networks (DCGAN) [20] to generate images and videos of a new traffic scene. The training videos and images were taken from the KITTI dataset [14], and traffic scenes were collected in overtaking situations while driving from Xi'an to Changshu, China. Similarly, Tan et al. (2021) attempted to create realistic scenes using GANs [21]. GANs were used in multiple projects to translate images from day to night and vice versa [22], [23], [24], [25], [26], [27] and diffusion models [28], [29]. Similarly,

different weather conditions were simulated with GANs, such as rainy, snowy, and overcast [30]. Cheng et al. [31] used GANs to address the problem of low resolution and blurred details in highway images caused by factors such as rain and fog, illumination interference, and nighttime lighting. These translations were used to improve all-day vehicle detection [32], traffic perception [33], object detection [34], anomaly detection [35], and the functionality of the Advanced Driver Assistance Systems [36].

### A. Aim of the study

This study aims to develop a deep learning-based pipeline that enhances the realism of traffic scene videos by transforming environmental conditions, specifically focusing on lighting and weather condition variations such as day-to-night and clear-to-rainy transitions. By combining CycleGAN-turbo [37] for domain translation with Real-ESRGAN [38] for resolution enhancement. Although significant progress has been made in image domain translation, relatively few studies have emphasised the realism of the generated videos. To assess its effectiveness, the generated scenes will be compared with both the output of CycleGAN-turbo and other state-of-the-art neural network architectures designed for similar tasks, such as translating day-to-night images. The comparison will be based on several performance metrics, including Temporal Consistency, Structural Fidelity, Visual Quality (PSNR, SSIM), and KL Divergence.

## II. METHOD

The dashcam videos in day and night lighting conditions were collected from YouTube from three cities, namely London (UK), Hong Kong and Los Angeles (USA). These cities were

chosen to represent diverse geographic locations on three continents (Europe, Asia, and North America), offering a wide range of traffic conditions and environmental contexts to test the effectiveness of the proposed enhancement pipeline. In addition, London and Hong Kong both have left-sided traffic, while Los Angeles has right-sided traffic. This choice of cities introduces a variation in driving behaviour, although differences in traffic flow, such as the direction of travel, were not explicitly controlled in this study.

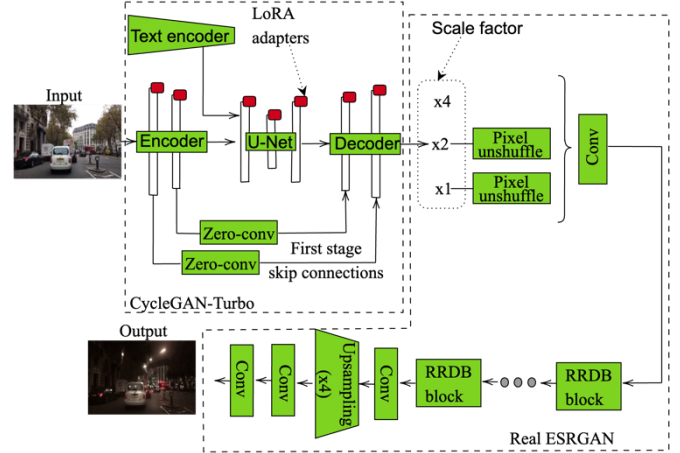


Fig. 1. Representation of the neural network architecture.

In each of these videos, a 20-second segment was extracted and passed through the pipeline, which encompassed CycleGAN-turbo and Real-ESRGAN as illustrated in Fig. 1. The

TABLE I. COMPARISON OF IMAGES OF TRAFFIC SCENES FROM DIFFERENT CITIES

Transition	Location	Source	Metric	CycleGAN-turbo	Ours
Day-to-night	London	<a href="https://youtu.be/Q14_dGvZ5yE?t=300">https://youtu.be/Q14_dGvZ5yE?t=300</a>	T-SIMM	0.9204 (0.0024)	0.9275 (0.0006)
			PSNR	27.7023 (0.0018)	27.6784 (0.0016)
			VPQ	14.0362	14.0138
	Hong Kong	<a href="https://youtu.be/ULcuZ3Q02SI?t=380">https://youtu.be/ULcuZ3Q02SI?t=380</a>	T-SIMM	0.9777 (0.0005)	0.9724 (0.0004)
			PSNR	27.6930 (0.0003)	27.6818 (0.0002)
			VPQ	14.0502	14.0372
	Los Angeles	<a href="https://youtu.be/4uhMg5na888?t=970">https://youtu.be/4uhMg5na888?t=970</a>	T-SIMM	0.9729 (0.0001)	0.9597 (0.0001)
			PSNR	27.7803 (0.0060)	27.7274 (0.0049)
			VPQ	14.0551	14.0106
Night-to-day	London	<a href="https://youtu.be/mEXVBiT1eAM?t=1340">https://youtu.be/mEXVBiT1eAM?t=1340</a>	T-SIMM	0.8677 (0.0251)	0.8973 (0.0080)
			PSNR	29.4572 (3.8110)	29.3145 (3.1562)
			VPQ	15.1004	15.0912
	Hong Kong	<a href="https://youtu.be/XaR6qEt-BIY?t=1540">https://youtu.be/XaR6qEt-BIY?t=1540</a>	T-SIMM	0.7909 (0.0027)	0.8540 (0.0011)
			PSNR	29.9508 (8.9165)	29.7831 (7.5484)
			VPQ	15.3165	15.2251
	Los Angeles	<a href="https://youtu.be/eR5vsNlLq4E?t=2340">https://youtu.be/eR5vsNlLq4E?t=2340</a>	T-SIMM	0.7925 (0.0012)	0.8508 (0.0003)
			PSNR	27.8157 (0.0124)	27.8067 (0.0091)
			VPQ	14.1619	14.1552
Clear-to-rainy	London	<a href="https://youtu.be/Q14_dGvZ5yE?t=300">https://youtu.be/Q14_dGvZ5yE?t=300</a>	T-SIMM	0.8235 (0.0075)	0.8205 (0.0014)
			PSNR	27.6295 (0.0014)	27.6618 (0.0011)
			VPQ	14.1931	14.2089
	Hong Kong	<a href="https://youtu.be/ULcuZ3Q02SI?t=380">https://youtu.be/ULcuZ3Q02SI?t=380</a>	T-SIMM	0.9636 (0.0020)	0.9459 (0.0022)
			PSNR	27.6244 (0.0001)	27.6579 (0.0001)
			VPQ	14.2044	14.2161
	Los Angeles	<a href="https://youtu.be/4uhMg5na888?t=970">https://youtu.be/4uhMg5na888?t=970</a>	T-SIMM	0.9380 (0.0002)	0.9093 (0.0002)
			PSNR	27.5918 (0.0053)	27.6259 (0.0063)
			VPQ	14.1614	14.1763

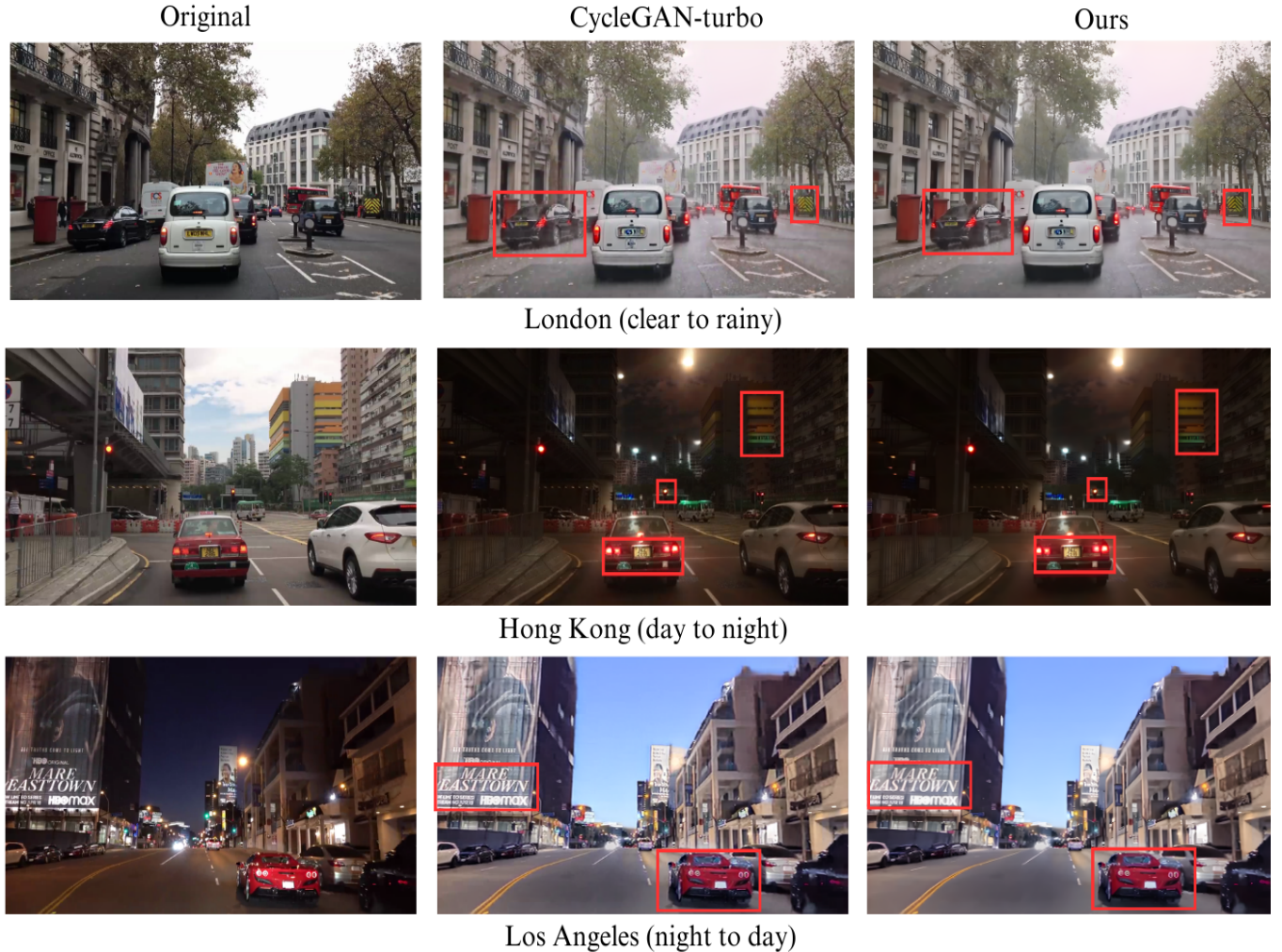


Fig. 2. Comparison of images of traffic scenes from three chosen cities.

20-second segments contained traffic for a better evaluation of the proposed enhancement pipeline. This selection ensured that the processing stages were applied to scenarios that are representative of real-world traffic conditions, including various vehicle movements and lighting variations. The day videos were used to translate from day to night and from clear to rainy scenarios, while the night videos from these locations were converted into daytime videos. Fig. 2 shows some of the translated images from the pipeline. The complete translated and original videos are available in the supplementary material.

The generated videos from the pipeline were compared with the CycleGAN-turbo across different metrics used to assess the quality of video processing, compression, or generation tasks, namely the Temporal Structural Similarity Metric (T-SIMM), Peak Signal-to-Noise Ratio (PSNR), Fréchet Video Distance (FVD) and Video Perceptual Quality (VPQ).

The extracted frames from the videos were used to compare with other neural network architecture models such as CycleGAN-turbo [37], CycleGAN [39], HEDNGAN [27], Pix2Pix [40] and ToDayGAN [41]. The weights are provided by

the authors in the repository linked with their publication. We used CycleGAN [39] weights from HEDNGAN [27] as they were trained to translate images from day to night.

### III. RESULTS

Fig. 2 shows the images of the traffic scenes generated by the CycleGAN-turbo [37] and the proposed pipeline. The generated videos are available in the supplementary material. The images generated by our architecture are clearer, and the lights are less scattered. The scenes from our pipeline present improved clarity and realistic light distribution, highlighting the enhanced quality achieved by our method for the day-to-night transition.

The calculated values for T-SIMM, PSNR, and VPQ are listed in Table I. For the “day-to-night” transition in London, our pipeline achieved a T-SIMM score of 0.9275 (0.0006), compared to 0.9204 (0.0024) for CycleGAN-turbo. In Hong Kong’s “night-to-day” transition, the T-SIMM score for our method was 0.8540 (0.0080), while CycleGAN-turbo scored 0.7909 (0.0027). The PSNR for the same transition in HongKong was 29.7831 (7.6484) with our model, while

CycleGAN-turbo reached 29.9508 (8.9165). In the “night-to-day” transition for Los Angeles, the VPQ values were 14.1763 for our pipeline and 14.1614 for the CycleGAN turbo, showing minimal variation between the methods.

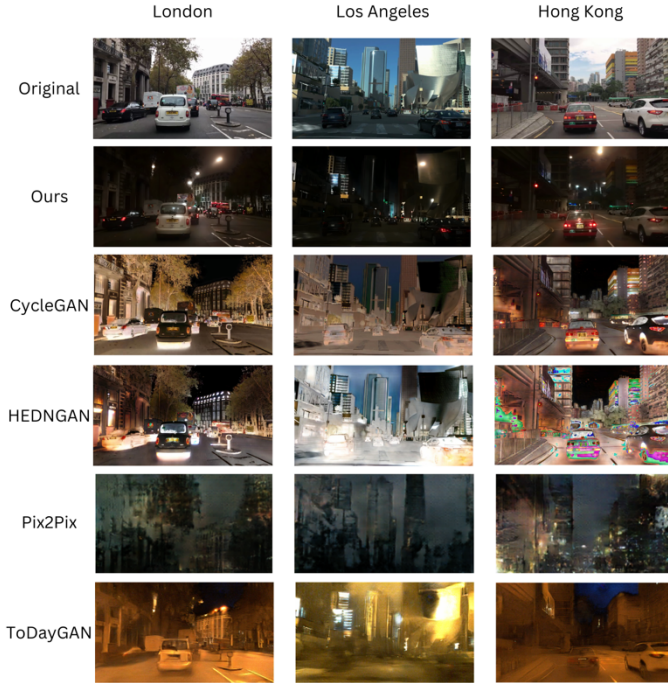


Fig.3. Representation of the neural network architecture.

The scenes of the original video were processed through different architectures, namely CycleGAN [39], HEDNGAN [27], Pix2Pix [40], and ToDayGAN [41] for comparison for day-to-night translation. Fig. 3 shows the output of the different architectures. These outputs were compared with each other using DINO structure similarity [42] and KL divergence and reported in Table II.

TABLE II. COMPARISON OF DINO-STRUCT-DISTANCE AND KL DIVERGENCE FOR DIFFERENT METHODS

Method	City	DINO-Struct	KL-Divergence
Ours	London	0.2805	1.0860
	Hong Kong	0.2677	1.3936
	Los Angeles	0.3290	1.6416
CycleGAN	London	0.3611	0.6170
	Hong Kong	0.4029	0.3995
	Los Angeles	0.3645	0.9067
HEDNGAN	London	0.3840	0.2638
	Hong Kong	0.4841	0.4695
	Los Angeles	0.4283	0.6883
Pix2Pix	London	0.6432	4.3092
	Hong Kong	0.6786	0.4995
	Los Angeles	0.6211	2.9395
ToDayGAN	London	0.4755	0.6773
	Hong Kong	0.5550	2.1409
	Los Angeles	0.5775	1.9629

#### IV. DISCUSSION

In this study, we proposed a novel pipeline to generate realistic traffic scene transformations across varying environmental conditions, combining CycleGAN-turbo for

domain translation and Real-ESRGAN for resolution enhancement. Our method showed improved performance in producing realistic visuals in multiple scenarios, as reflected by metrics such as T-SIMM, PSNR and VPQ.

Our proposed model demonstrates superior performance compared to CycleGAN-turbo in various transformation scenarios, as evidenced by Fig. 2 and Table II. Qualitatively, our model consistently generates more realistic outputs with enhanced clarity, sharper structural details, and natural lighting transitions, particularly evident in day-to-night transformations, where the CycleGAN-turbo exhibits scattered lighting effects and less realistic shadows. Quantitatively, our model achieves higher T-SIMM scores in most scenarios, such as a 1.37% improvement for day-to-night transitions in Los Angeles (0.9729 vs. 0.9597) and a 7.97% improvement for night-to-day transitions in Hong Kong (0.8540 vs. 0.7909). For clear-to-rainy transitions, the T-SIMM score for London is nearly on par, with our model achieving 0.8205 compared to 0.8235, a minor 0.36% reduction that is offset by better perceptual realism and structural integrity.

Although PSNR values for our model are slightly lower in certain cases (e.g., 27.6784 vs. 27.7023 for day-to-night in London, a 0.09% difference), this is attributed to the trade-off between pixel-level fidelity and perceptual improvements. PSNR focuses on pixel-wise similarity and may not fully capture perceptual quality enhancements that result from subtle adjustments in texture and lighting. Similarly, VPQ scores, which reflect perceptual quality, show minimal variations, such as 14.0138 versus 14.0362 for day to night in London, a negligible 0.16% reduction, highlighting that perceived quality remains consistent while structural preservation and realism improve. For clear-to-rainy transformations, our model achieves slightly higher VPQ scores, such as 14.2089 in London compared to 14.1931, reflecting a 0.11% improvement, further showcasing its ability to handle diverse environmental conditions effectively.

The results presented in Table II and Fig. 3 underscore the advantages of our proposed pipeline over existing methods. Table II demonstrates that our model consistently achieves better structural preservation (DINO Structure Similarity) and KL divergence compared to other models. For example, in the night-to-day transition, our method achieves a DINO similarity score compared to Cycle GAN (0.2805 vs. 0.3605) for London, 28.52%, indicating better structural fidelity.

#### A. Limitations and Future Work

The current study has several limitations. It relies heavily on established neural network architectures, such as CycleGAN-Turbo and Real-ESRGAN, which restrict the adaptability of the approach to specific traffic scene transformations. Furthermore, the evaluation process lacks direct human feedback, which is crucial to validate the realism and quality of the generated videos and frames. Additionally, the pipeline only translates the frames from one environment to another, without addressing the density of traffic, such as the number of cars and pedestrians, which would sometimes be needed for experimental settings.

To address these limitations, future work will focus on collecting direct human feedback to enhance the evaluation and

refinement of the generated outputs. This will involve recruiting participants to assess the perceptual realism of the transformed videos under various conditions, using methods such as Likert-scale surveys, pairwise comparisons, and qualitative interviews. Additionally, neural network architectures specifically designed for traffic scene transformations will be developed to improve adaptability and performance, optimizing results for diverse environmental conditions and dynamic traffic scenarios. The network will also be extended to simulate traffic scenarios with varying densities of vehicles and pedestrians, enhancing its utility for applications such as ADAS training and traffic behaviour studies. Expanding the dataset to include diverse traffic environments, such as rural roads, extreme weather conditions, and culturally distinct traffic patterns, is another priority, with specialized datasets for rare conditions (e.g., heavy snowfall, fog) curated to test the pipeline's adaptability further. Beyond human perceptual studies, advanced evaluation methods, such as eye-tracking and physiological metrics like heart rate variability, will be explored to gain deeper insights into user responses to transformed scenes. Statistical analyses will also be performed to validate the significance of observed improvements and establish the practical relevance of the results such as done by Sharma et al. [43], [44], [45]. By addressing these aspects, future work aims to refine the proposed pipeline further and extend its applicability to a broader range of real-world scenarios and practical use cases.

## V. SUPPLEMENTARY MATERIAL

Original videos used for network translation, translated videos, frames used for comparison, and source code are available at <http://doi.org/10.4121/b43a5466-f12a-487d-9034-bcb75f3c8426>. The maintained version of the code is available at <https://github.com/Shaadalam9/traffic-pipeline>.

## REFERENCES

- [1] L. Garay, D. L. Fisher, and K. L. Hancock, 'Effects of driving experience and lighting condition on driving performance', *Proc. Hum. Factors Ergon. Soc. Annu. Meet.*, vol. 48, no. 19, pp. 2290–2294, Sep. 2004, doi: 10.1177/154193120404801918.
- [2] U. Tränkle, C. Gelau, and T. Metker, 'Risk perception and age-specific accidents of young drivers', *Accid. Anal. Prev.*, vol. 22, no. 2, pp. 119–125, Apr. 1990, doi: 10.1016/0001-4575(90)90063-Q.
- [3] N. A. Siddiqui, X. Chu, and M. Guttenplan, 'Crossing locations, light conditions, and pedestrian injury severity', *Transp. Res. Rec.*, vol. 1982, no. 1, pp. 141–149, Jan. 2006, doi: 10.1177/0361198106198200118.
- [4] T. Evans, R. Stuckey, and W. Macdonald, 'Young drivers' perceptions of risk and difficulty: Day versus night', *Accid. Anal. Prev.*, vol. 147, p. 105753, Nov. 2020, doi: 10.1016/j.aap.2020.105753.
- [5] B. J. Campbell, C. V. Zegeer, H. H. Huang, M. J. Cynecki, and University of North Carolina (System). Highway Safety Research Center, 'A review of pedestrian safety research in the United States and abroad', FHWA-RD-03-042, Nov. 2003. Accessed: Dec. 21, 2024. [Online]. Available: <https://rosap.nhtl.bts.gov/view/dot/16111>
- [6] R. Miles-Doan, 'Alcohol use among pedestrians and the odds of surviving an injury: Evidence from Florida law enforcement data', *Accid. Anal. Prev.*, vol. 28, no. 1, pp. 23–31, Jan. 1996, doi: 10.1016/0001-4575(95)00030-5.
- [7] J. M. Sullivan and M. J. Flannagan, 'The role of ambient light level in fatal crashes: Inferences from daylight saving time transitions', *Accid. Anal. Prev.*, vol. 34, no. 4, pp. 487–498, Jul. 2002, doi: 10.1016/S0001-4575(01)00046-X.
- [8] M. J. Allen, 'Vision and highway safety', vol. 11, 1970, Accessed: Dec. 21, 2024. [Online]. Available: <https://trid.trb.org/View/111898>
- [9] W. Ackaah, B. A. Apuseyine, and F. K. Afukaar, 'Road traffic crashes at night-time: Characteristics and risk factors', *Int. J. Inj. Contr. Saf. Promot.*, vol. 27, no. 3, pp. 392–399, Jul. 2020, doi: 10.1080/17457300.2020.1785508.
- [10] T. Åkerstedt, G. Kecklund, and L.-G. Hörte, 'Night driving, season, and the risk of highway accidents', *Sleep*, vol. 24, no. 4, pp. 401–406, Jun. 2001, doi: 10.1093/sleep/24.4.401.
- [11] K. Zhang and M. Hassan, 'Crash severity analysis of nighttime and daytime highway work zone crashes', *PLOS ONE*, vol. 14, no. 8, p. e0221128, Aug. 2019, doi: 10.1371/journal.pone.0221128.
- [12] G. J. Brostow, J. Shotton, J. Fauqueur, and R. Cipolla, 'Segmentation and recognition using structure from motion point clouds', in *Computer Vision – ECCV 2008*, D. Forsyth, P. Torr, and A. Zisserman, Eds., Berlin, Heidelberg: Springer, 2008, pp. 44–57. doi: 10.1007/978-3-540-88682-2\_5.
- [13] M. Cordts et al., 'The cityscapes dataset for semantic urban scene understanding', in *IEEE Conference on Computer Vision and Pattern Recognition*, 2016, pp. 3213–3223. doi: 10.1109/CVPR.2016.350.
- [14] A. Geiger, P. Lenz, and R. Urtasun, 'Are we ready for autonomous driving? The KITTI vision benchmark suite', in *2012 IEEE Conference on Computer Vision and Pattern Recognition*, Jun. 2012, pp. 3354–3361. doi: 10.1109/CVPR.2012.6248074.
- [15] J. Houston et al., 'One thousand and one hours: Self-driving motion prediction dataset', in *2020 Conference on Robot Learning*, PMLR, Oct. 2021, pp. 409–418. doi: arXiv:2006.14480v2.
- [16] A. Patil, S. Malla, H. Gang, and Y.-T. Chen, 'The H3D dataset for full-surround 3D multi-object detection and tracking in crowded urban scenes', in *2019 International Conference on Robotics and Automation (ICRA)*, May 2019, pp. 9552–9557. doi: 10.1109/ICRA.2019.8793925.
- [17] X. Huang et al., 'The ApolloScape dataset for autonomous driving', in *2018 IEEE/CVF Conference on Computer Vision and Pattern Recognition Workshops (CVPRW)*, 2018, pp. 954–960. doi: 10.1109/CVPRW.2018.00141.
- [18] S. Hwang, J. Park, N. Kim, Y. Choi, and I. So Kweon, 'Multispectral pedestrian detection: Benchmark dataset and baseline', in *IEEE Conference on Computer Vision and Pattern Recognition*, 2015, pp. 1037–1045. doi: 10.1109/CVPR.2015.7298706.
- [19] D. Zhao, J. Weng, and Y. Liu, 'Generating traffic scene with deep convolutional generative adversarial networks', in *2017 Chinese Automation Congress (CAC)*, Oct. 2017, pp. 6612–6617. doi: 10.1109/CAC.2017.8243968.
- [20] M. Mirza and S. Osindero, 'Conditional Generative Adversarial Nets', Nov. 06, 2014, arXiv: arXiv:1411.1784. doi: 10.48550/arXiv.1411.1784.
- [21] S. Tan, K. Wong, S. Wang, S. Manivasagam, M. Ren, and R. Urtasun, 'SceneGen: Learning to generate realistic traffic scenes', in *IEEE/CVF Conference on Computer Vision and Pattern Recognition*, 2021, pp. 892–901. doi: 10.1109/CVPR46437.2021.00095.
- [22] C.-T. Lin, S.-W. Huang, Y.-Y. Wu, and S.-H. Lai, 'GAN-based day-to-night image style transfer for nighttime vehicle detection', *IEEE Trans. Intell. Transp. Syst.*, vol. 22, no. 2, pp. 951–963, Feb. 2021, doi: 10.1109/TITS.2019.2961679.
- [23] G. Bang, J. Lee, Y. Endo, T. Nishimori, K. Nakao, and S. Kamijo, 'Semantic and geometric-aware day-to-night image translation network', *Sensors*, vol. 24, no. 4, Art. no. 4, Jan. 2024, doi: 10.3390/s24041339.
- [24] D. Shiotsuka et al., 'GAN-based semantic-aware translation for day-to-night images', in *2022 IEEE International Conference on Consumer Electronics (ICCE)*, Jan. 2022, pp. 1–6. doi: 10.1109/ICCE53296.2022.9730532.
- [25] A. Somanna, S. M. A. Kodipalli, and T. Rao, 'Day and night city view image translations using Cycle GAN', in *2024 IEEE Recent Advances in Intelligent Computational Systems (RAICS)*, May 2024, pp. 1–5. doi: 10.1109/RAICS61201.2024.10689989.
- [26] A. Punnappurath, A. Abuolaim, A. Abdelhamed, A. Levinshtein, and M. S. Brown, 'Day-to-night image synthesis for training nighttime neural ISPs', presented at the IEEE/CVF Conference on Computer Vision and Pattern Recognition, 2022, pp. 10769–10778. doi: 10.1109/CVPR52688.2022.01050.
- [27] A. Mohwald, T. Jenicek, and O. Chum, 'Dark side augmentation: Generating diverse night examples for metric learning', in *IEEE/CVF*

- International Conference on Computer Vision*, 2023, pp. 11153–11163. doi: 10.1109/ICCV51070.2023.01024.
- [28] J. Li *et al.*, ‘Light the night: A multi-condition diffusion framework for unpaired low-light enhancement in autonomous driving’, in *IEEE/CVF Conference on Computer Vision and Pattern Recognition*, 2024, pp. 15205–15215. doi: 10.1109/CVPR52733.2024.01440.
- [29] M. Ishikawa, N. Okada, and T. Ikeda, ‘Image processing methods and the utility of diffusion models for architectural exterior inspection by day and night’, in *2024 Australian & New Zealand Control Conference (ANZCC)*, Feb. 2024, pp. 37–42. doi: 10.1109/ANZCC59813.2024.10432822.
- [30] V. Muşat, I. Fursa, P. Newman, F. Cuzzolin, and A. Bradley, ‘Multi-weather city: Adverse weather stacking for autonomous driving’, in *IEEE/CVF International Conference on Computer Vision*, 2021, pp. 2906–2915. doi: 10.1109/ICCVW54120.2021.00325.
- [31] X. Cheng, J. Zhou, J. Song, and X. Zhao, ‘A highway traffic image enhancement algorithm based on improved GAN in complex weather conditions’, *IEEE Trans. Intell. Transp. Syst.*, vol. 24, no. 8, pp. 8716–8726, Aug. 2023, doi: 10.1109/TITS.2023.3258063.
- [32] W. Zhou, C. Wang, Y. Ge, L. Wen, and Y. Zhan, ‘All-day vehicle detection from surveillance videos based on illumination-adjustable generative adversarial network’, *IEEE Trans. Intell. Transp. Syst.*, vol. 25, no. 5, pp. 3326–3340, May 2024, doi: 10.1109/TITS.2023.3328195.
- [33] K. Li, Z. Dai, X. Wang, Y. Song, and G. Jeon, ‘GAN-based controllable image data augmentation in low-visibility conditions for improved roadside traffic perception’, *IEEE Trans. Consum. Electron.*, vol. 70, no. 3, pp. 6174–6188, Aug. 2024, doi: 10.1109/TCE.2024.3387557.
- [34] I. Teeti, V. Musat, S. Khan, A. Rast, F. Cuzzolin, and A. Bradley, ‘Vision in adverse weather: Augmentation using CycleGANs with various object detectors for robust perception in autonomous racing’, Jan. 02, 2023, *arXiv: arXiv:2201.03246*. doi: 10.48550/arXiv.2201.03246.
- [35] V. S. Rao, R. Balakrishna, Y. A. B. El-Ebiary, P. Thapar, K. A. Saravanan, and S. R. Godla, ‘AI Driven Anomaly Detection in Network Traffic Using Hybrid CNN-GAN’, *J. Adv. Inf. Technol.*, vol. 15, no. 7, pp. 886–895, 2024, doi: 10.12720/jait.15.7.886-895.
- [36] H. K. I. S. Lakmal and M. B. Dissanayake, ‘Improving the visibility at night for advanced driver assistance systems using night-to-day image translation’, in *6th SLAAI International Conference on Artificial Intelligence (SLAAI-ICAI)*, Dec. 2022, pp. 1–6. doi: 10.1109/SLAAI-ICAI56923.2022.10002695.
- [37] G. Parmar, T. Park, S. Narasimhan, and J.-Y. Zhu, ‘One-step image translation with text-to-image models’, Mar. 18, 2024, *arXiv: arXiv:2403.12036*. doi: 10.48550/arXiv.2403.12036.
- [38] X. Wang, L. Xie, C. Dong, and Y. Shan, ‘Real-ESRGAN: Training real-world blind super-resolution with pure synthetic data’, in *IEEE/CVF International Conference on Computer Vision*, 2021, pp. 1905–1914. doi: 10.1109/ICCVW54120.2021.00217.
- [39] J.-Y. Zhu, T. Park, P. Isola, and A. A. Efros, ‘Unpaired image-to-image translation using cycle-consistent adversarial networks’, in *IEEE International Conference on Computer Vision*, 2017, pp. 2223–2232. doi: 10.1109/ICCV.2017.244.
- [40] P. Isola, J.-Y. Zhu, T. Zhou, and A. A. Efros, ‘Image-to-image translation with conditional adversarial networks’, presented at the IEEE Conference on Computer Vision and Pattern Recognition, 2017, pp. 1125–1134. doi: 10.1109/CVPR.2017.632.
- [41] A. Anoosheh, T. Sattler, R. Timofte, M. Pollefeys, and L. V. Gool, ‘Night-to-day image translation for retrieval-based localization’, in *2019 International Conference on Robotics and Automation (ICRA)*, May 2019, pp. 5958–5964. doi: 10.1109/ICRA.2019.8794387.
- [42] M. Caron *et al.*, ‘Emerging properties in self-supervised vision transformers’, in *IEEE/CVF International Conference on Computer Vision*, 2021, pp. 9650–9660. doi: 10.1109/ICCV48922.2021.00951.
- [43] R. Sharma *et al.*, ‘A Deep Learning Approach to Upscaling “Low-Quality” MR Images: An In Silico Comparison Study Based on the UNet Framework’, *Appl. Sci.*, vol. 12, no. 22, Art. no. 22, Jan. 2022, doi: 10.3390/app122211758.
- [44] R. Sharma, P. Tsiamyrtzis, A. G. Webb, E. L. Leiss, and N. V. Tsekos, ‘Learning to deep learning: statistics and a paradigm test in selecting a UNet architecture to enhance MRI’, *Magn. Reson. Mater. Phys. Biol. Med.*, vol. 37, no. 3, pp. 507–528, Jul. 2024, doi: 10.1007/s10334-023-01127-6.
- [45] M. Javadi, R. Sharma, P. Tsiamyrtzis, A. G. Webb, E. Leiss, and N. V. Tsekos, ‘Let UNet Play an Adversarial Game: Investigating the Effect of Adversarial Training in Enhancing Low-Resolution MRI’, *J. Imaging Inform. Med.*, Jul. 2024, doi: 10.1007/s10278-024-01205-8.